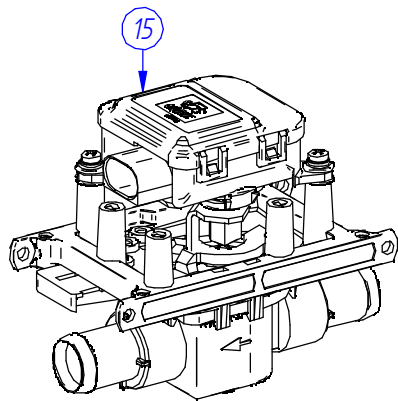
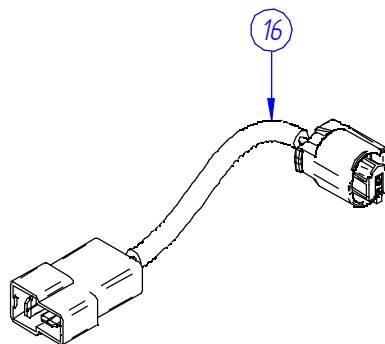
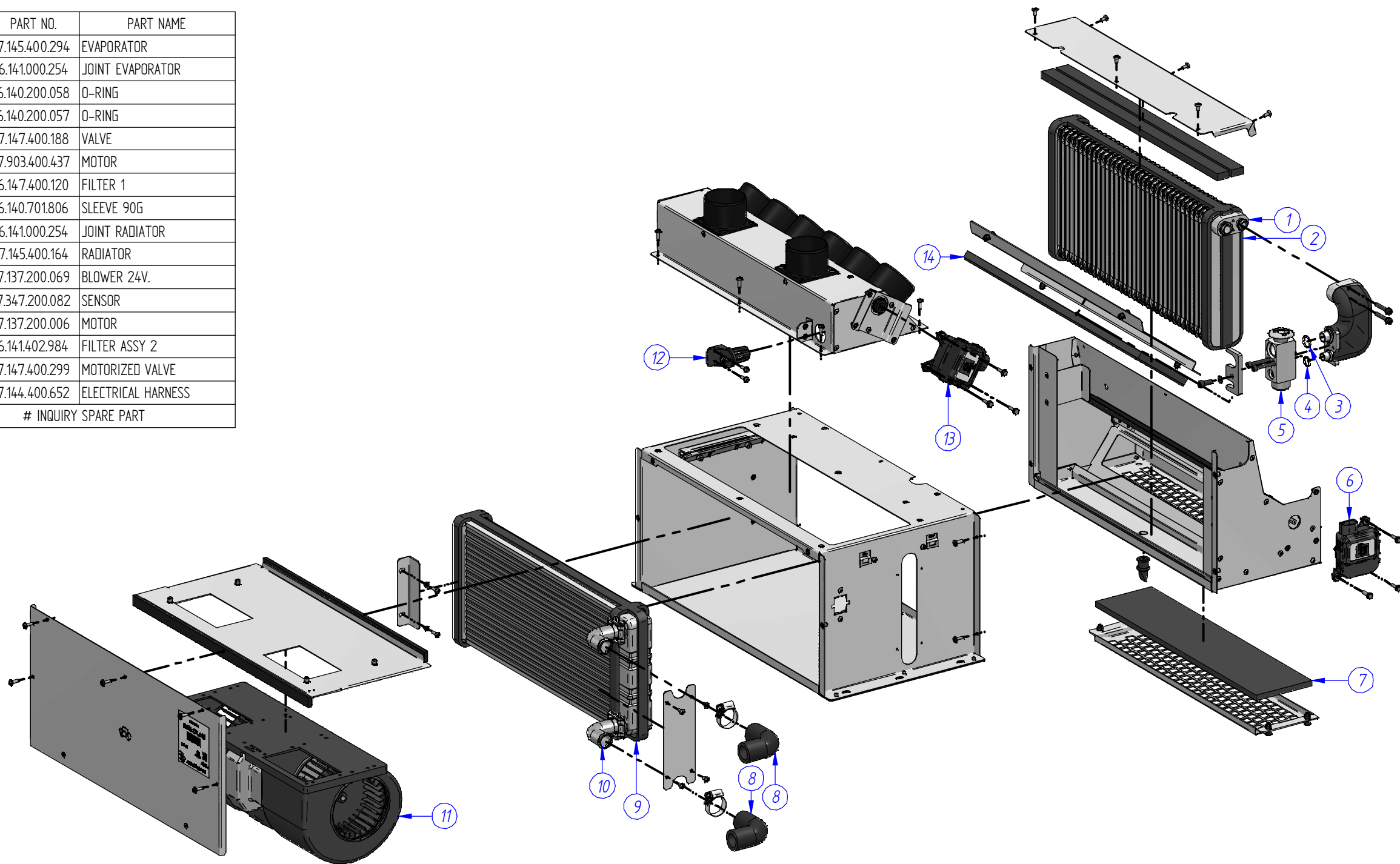

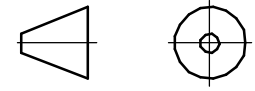


ITEM	PART NO.	PART NAME
1	7.145.400.294	EVAPORATOR
2	6.141.000.254	JOINT EVAPORATOR
3	6.140.200.058	O-RING
4	6.140.200.057	O-RING
5	7.147.400.188	VALVE
6	7.903.400.437	MOTOR
7	6.147.400.120	FILTER 1
8	6.140.701.806	SLEEVE 90G
9	6.141.000.254	JOINT RADIATOR
10	7.145.400.164	RADIATOR
11	7.137.200.069	BLOWER 24V.
12	7.347.200.082	SENSOR
13	7.137.200.006	MOTOR
14	6.141.402.984	FILTER ASSY 2
15	7.147.400.299	MOTORIZED VALVE
16	7.144.400.652	ELECTRICAL HARNESS
# INQUIRY SPARE PART		



THIS DOCUMENT IS SUPPLIED, DESIGNED AND DOCUMENTED ON SANZ CLIMA FORMAT. THE ORIGINAL IS ON FILE AT SUPPLIER LOCATION. THE SUPPLIER IS RESPONSIBLE FOR PROVIDING SANZ CLIMA REVISION FILE PRINT FOR INTERNAL DISTRIBUTION.

NO DEVIATION FROM THE CONSTRUCTION DEFINED BY AN APPROVED SAMPLE OR DETAILED SPECIFICATION (ON FILE IN SANZ CLIMA ENGINEERING DEPARTMENT) WILL BE MADE WITHOUT APPROVAL FROM SANZ CLIMA.

A	REVISED INITIAL RELEASE	19/05/2016	R. Gomez	I. Cuenca	I. Cuenca	-																																								
SYM	REVISION RECORD	DATE	BY	ENGR.	M.E.	NPCA NO.																																								
CAD SYSTEM:	Solid Edge	 Leader in HVAC Systems and innovation C/ Ingeniero Torres Quevedo 6 28022 Madrid, Spain Phone +34 91 761 38 34 Fax +34 91 747 83 34 mail@sanz.eu																																												
FIRST ANGLE PROJECTION		UNLESS OTHERWISE SPECIFIED TOLERANCES ON: medium <table border="1"> <tr> <th>Precision Rate</th> <th>0.5 to 3</th> <th>3 to 6</th> <th>6 to 30</th> <th>30 to 120</th> <th>120 to 315</th> <th>315 to 1000</th> <th>1000 to 2000</th> </tr> <tr> <td>fine</td> <td>±0.05</td> <td>±0.05</td> <td>±0.1</td> <td>±0.15</td> <td>±0.2</td> <td>±0.3</td> <td>±0.5</td> </tr> <tr> <td>medium</td> <td>±0.1</td> <td>±0.1</td> <td>±0.2</td> <td>±0.3</td> <td>±0.5</td> <td>±0.8</td> <td>±1.2</td> </tr> <tr> <td>gross</td> <td>±0.15</td> <td>±0.2</td> <td>±0.5</td> <td>±0.8</td> <td>±1.2</td> <td>±2</td> <td>±3</td> </tr> <tr> <td>very gross</td> <td>-</td> <td>±0.5</td> <td>±1</td> <td>±1.5</td> <td>±2</td> <td>±3</td> <td>±4</td> </tr> </table>					Precision Rate	0.5 to 3	3 to 6	6 to 30	30 to 120	120 to 315	315 to 1000	1000 to 2000	fine	±0.05	±0.05	±0.1	±0.15	±0.2	±0.3	±0.5	medium	±0.1	±0.1	±0.2	±0.3	±0.5	±0.8	±1.2	gross	±0.15	±0.2	±0.5	±0.8	±1.2	±2	±3	very gross	-	±0.5	±1	±1.5	±2	±3	±4
Precision Rate	0.5 to 3	3 to 6	6 to 30	30 to 120	120 to 315	315 to 1000	1000 to 2000																																							
fine	±0.05	±0.05	±0.1	±0.15	±0.2	±0.3	±0.5																																							
medium	±0.1	±0.1	±0.2	±0.3	±0.5	±0.8	±1.2																																							
gross	±0.15	±0.2	±0.5	±0.8	±1.2	±2	±3																																							
very gross	-	±0.5	±1	±1.5	±2	±3	±4																																							
MATERIAL:	SURFACES	HOLE DIA. H13	HOLE SPACING ± 0.4	HOLE LOC ± 0.2	TITLE																																									
TREATMENT:	✓ AA	AXEL DIA. h13	NON-CUMULATIVE	±[.0078]	8.024.121.157																																									
QUANTITY:	1	RIGHT:	-	LEFT:	-	APPLICATION																																								
WEIGHT:	MFG/PURCH: -	DIMENSIONS IN (PARENTHESIS) ARE FOR INFORMATION ONLY. TOLERANCES DO NOT APPLY.			DEFROSTER																																									
NEXT DRAWING:		DRAWING NO.		REV																																										
A3		8.024.121.157_QR		A																																										
SCALE:		O:S		COMMODITY CODE:																																										